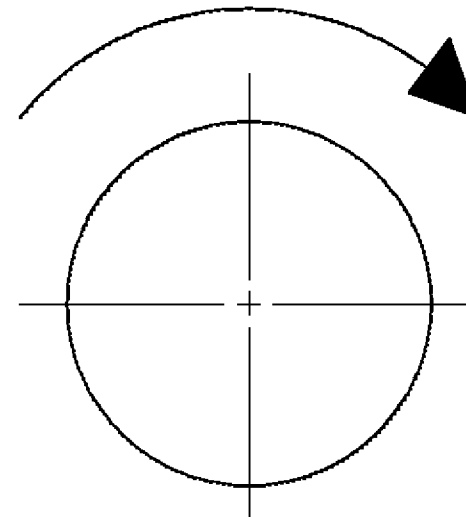


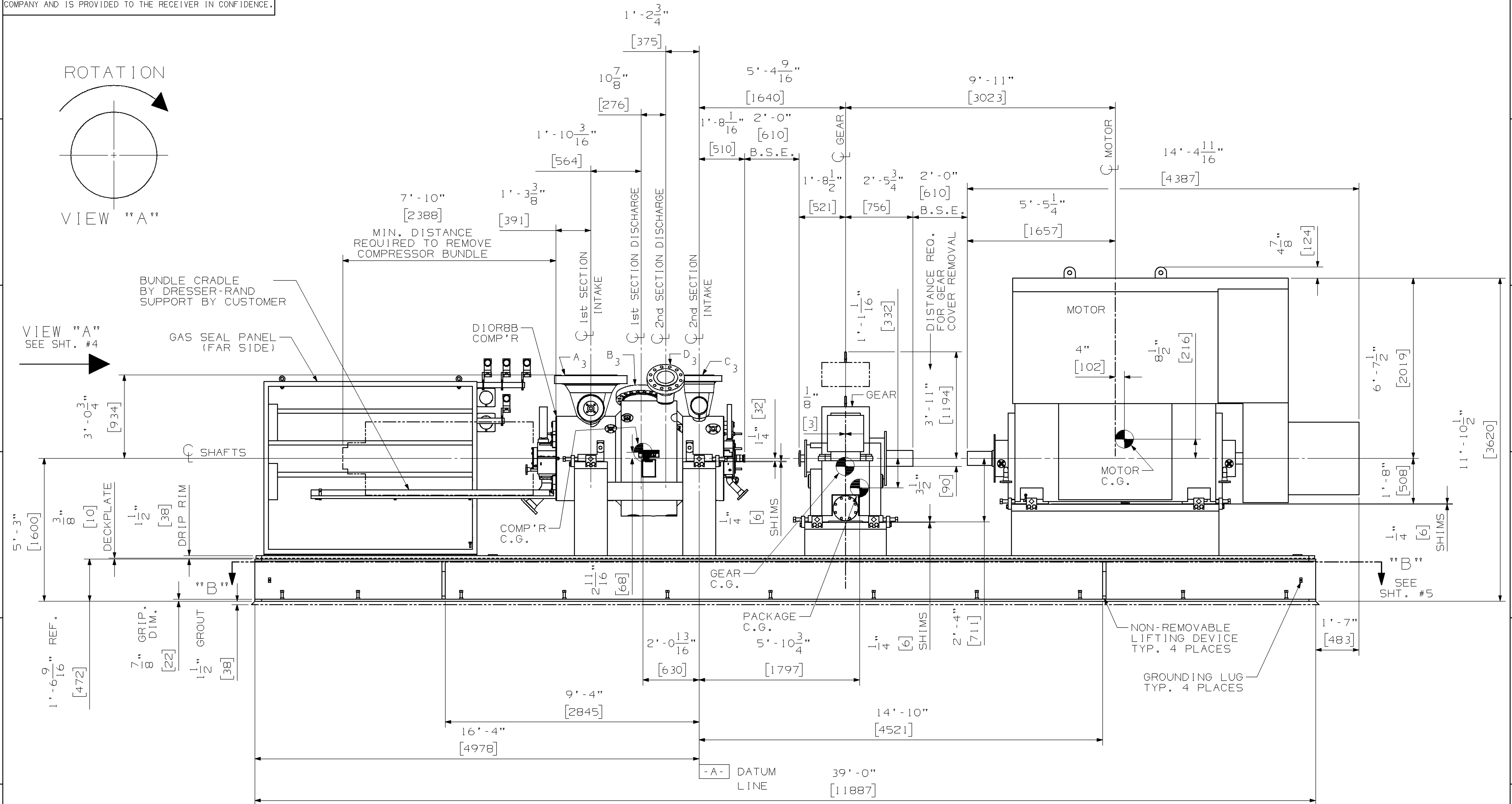
----- NOTICE -----
THIS DOCUMENT CONTAINS CONFIDENTIAL AND TRADE SECRET
INFORMATION AND IS THE PROPERTY OF DRESSER-RAND
COMPANY AND IS PROVIDED TO THE RECEIVER IN CONFIDENCE.

ROTATION



VIEW "A"

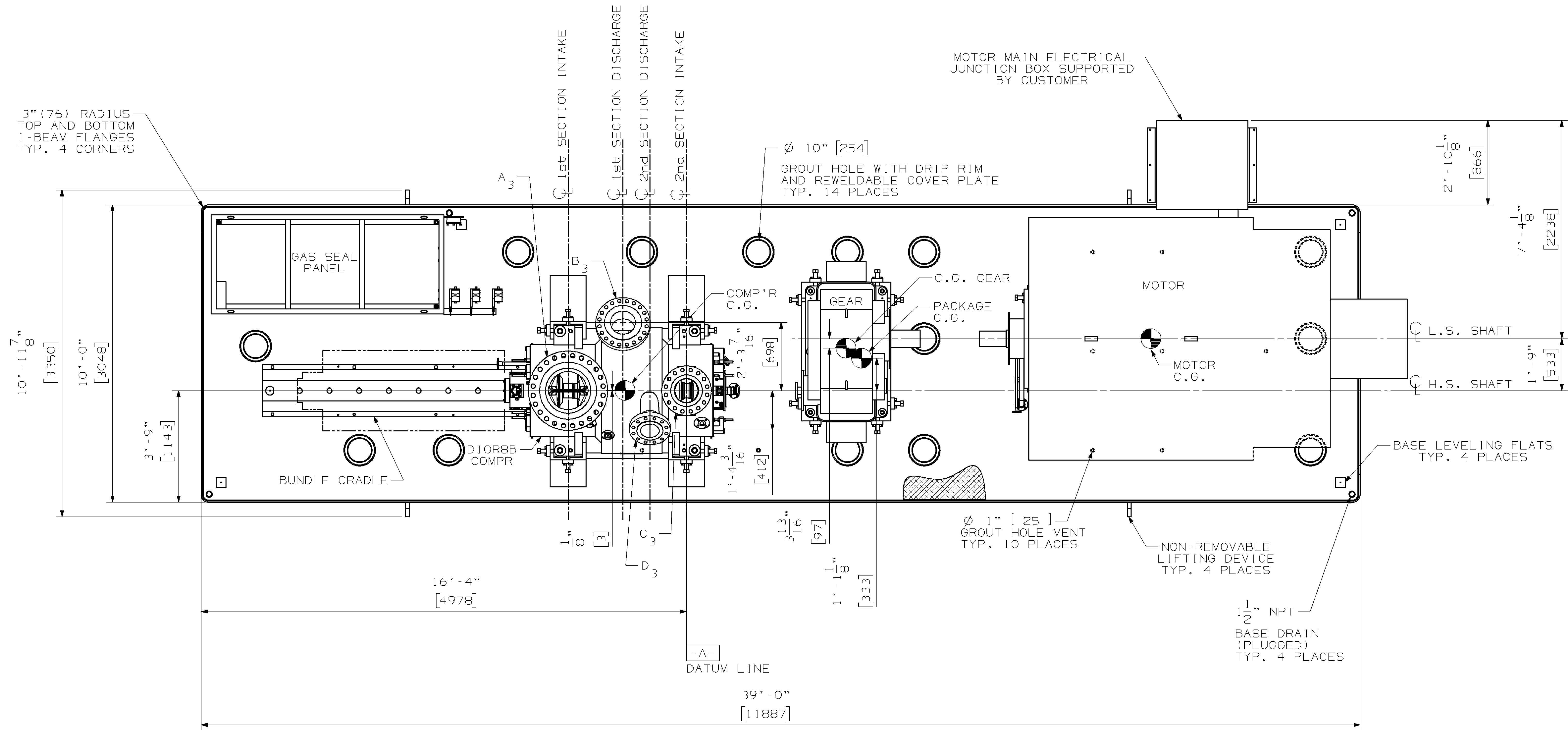
VIEW "A"
SEE SHT. #4



OUTLINE		
D10 COMP'R'-GEAR-MOTOR		
DRESSER-RAND		
TURBO PRODUCTS DIVISION OLEAN, N.Y. USA		
128-994-501	SH. 2 OF 8	REV. 03

UG FILENAME: 128-994-501:(dwg_128-994-501)

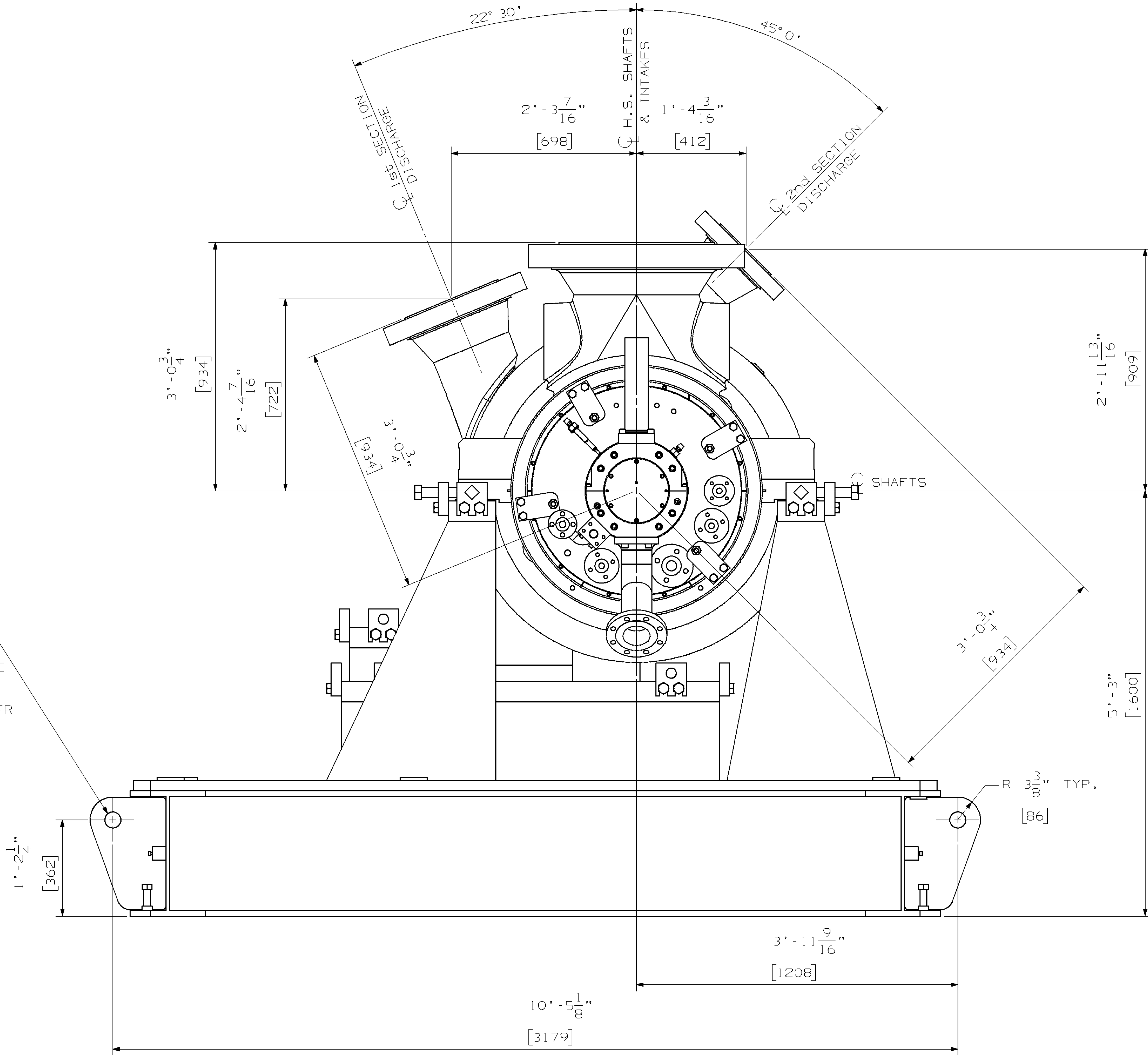
----- NOTICE -----
THIS DOCUMENT CONTAINS CONFIDENTIAL AND TRADE SECRET
INFORMATION AND IS THE PROPERTY OF DRESSER-RAND
COMPANY AND IS PROVIDED TO THE RECEIVER IN CONFIDENCE.



OUTLINE		
D10 COMPR'-GEAR-MOTOR		
DRESSER-RAND		
TURBO PRODUCTS DIVISION OLEAN, N.Y. USA		
128-994-501	SH. 3 OF 8	REV. 03

----- NOTICE -----
THIS DOCUMENT CONTAINS CONFIDENTIAL AND TRADE SECRET
INFORMATION AND IS THE PROPERTY OF DRESSER-RAND
COMPANY AND IS PROVIDED TO THE RECEIVER IN CONFIDENCE.

$\varnothing 2\frac{3}{8}$ " [60] LIFTING HOLE TYP.
THRU $1\frac{1}{2}$ " [38] THK. NON-REMOVABLE
LIFTING LUG TYP. (4) PLACES
FOR $\varnothing 2$ " [51] CLEVIS BY CUSTOMER

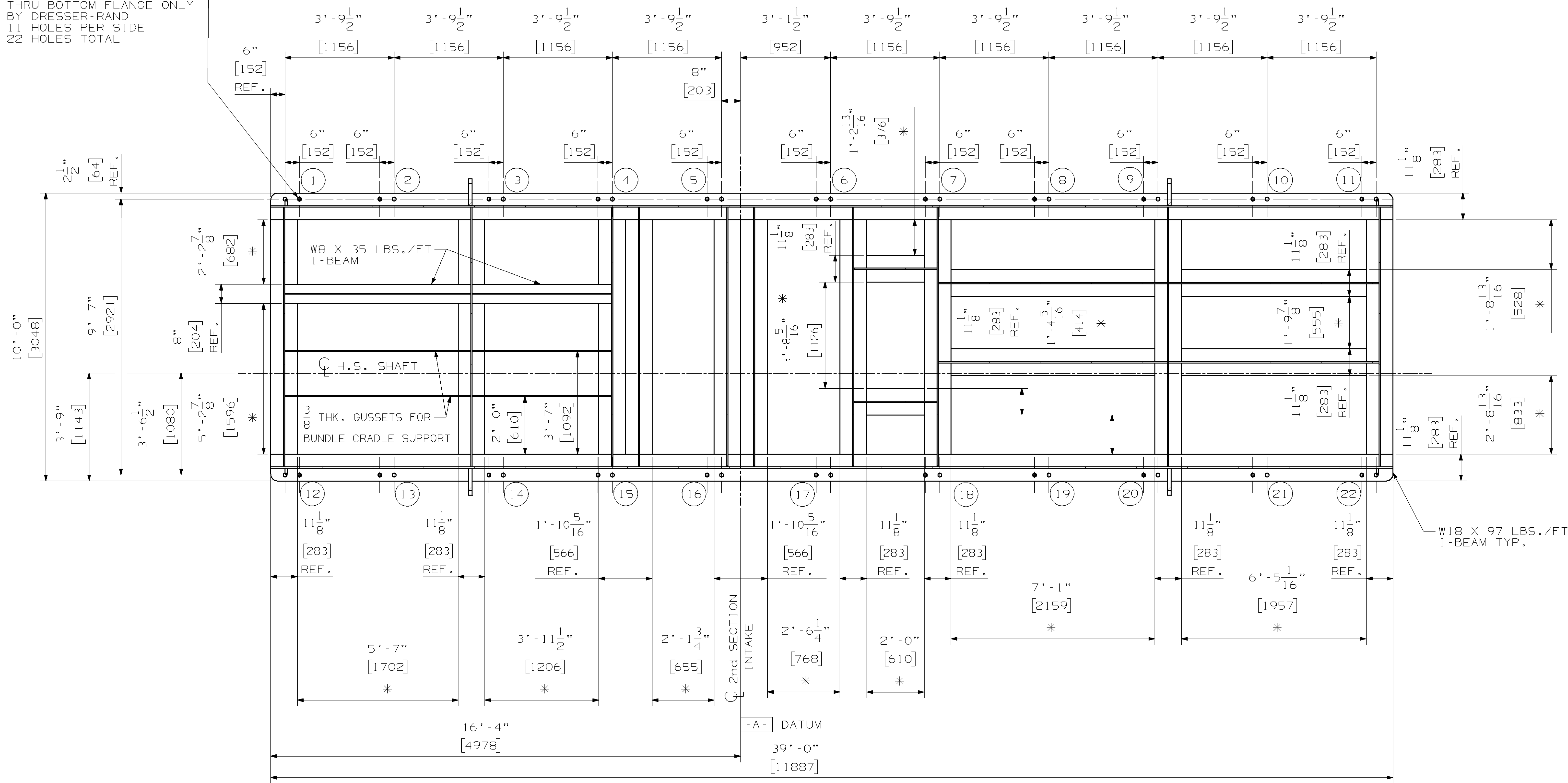


VIEW "A"
FROM SHT. #1.

OUTLINE		
D10 COMPR'-GEAR-MOTOR		
DRESSER-RAND		
TURBO PRODUCTS DIVISION OLEAN, N.Y. USA		
128-994-501	SH. 4 OF 8	REV. 03

----- NOTICE -----
THIS DOCUMENT CONTAINS CONFIDENTIAL AND TRADE SECRET
INFORMATION AND IS THE PROPERTY OF DRESSER-RAND
COMPANY AND IS PROVIDED TO THE RECEIVER IN CONFIDENCE.

1"-14NF LEVELING SCREWS
THRU BOTTOM FLANGE ONLY
BY DRESSER-RAND
11 HOLES PER SIDE
22 HOLES TOTAL



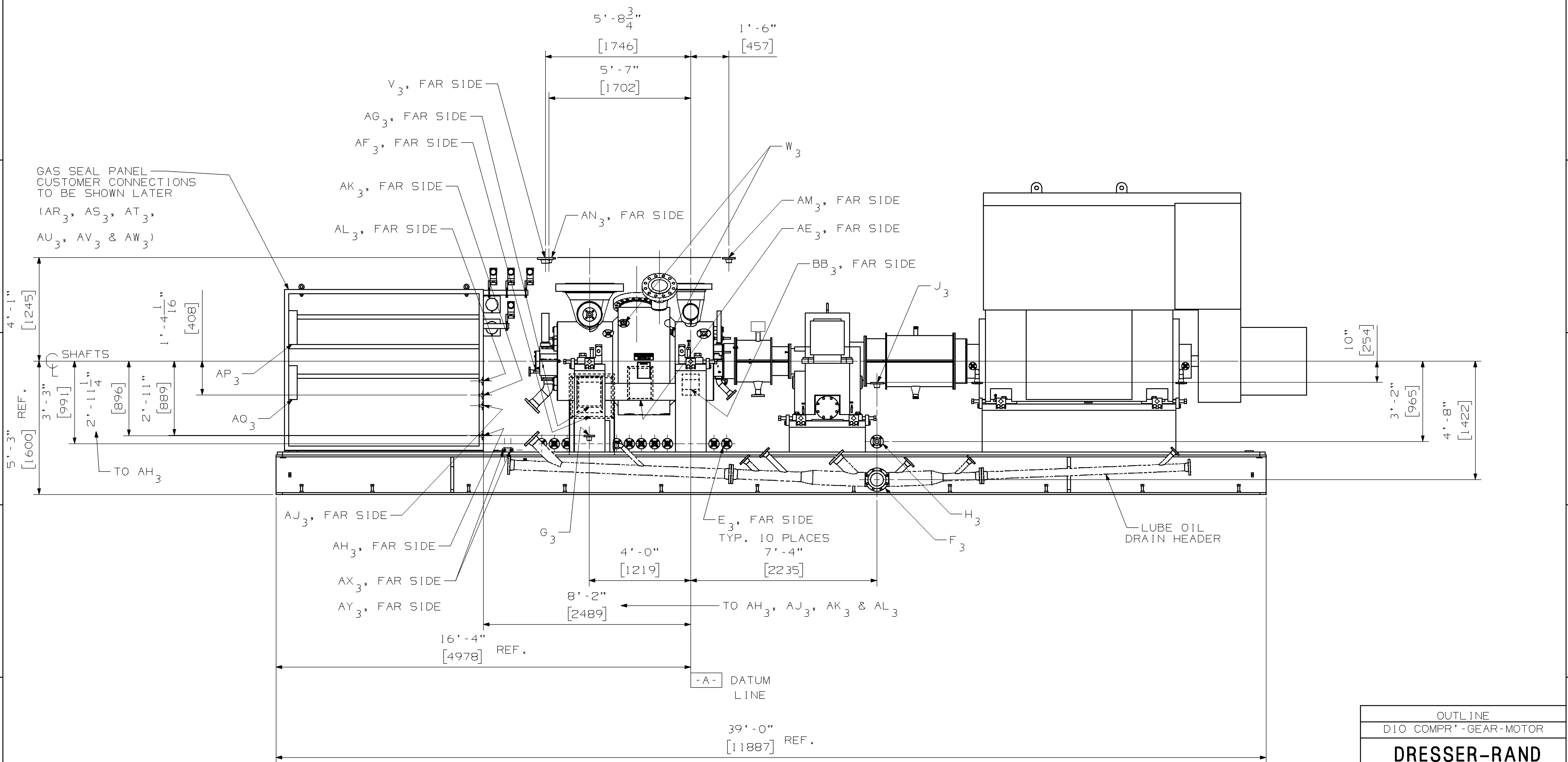
* DENOTES DISTANCE BETWEEN BEAMS

UG_FILENAME: 128-994-501:(dwg_128-994-501)

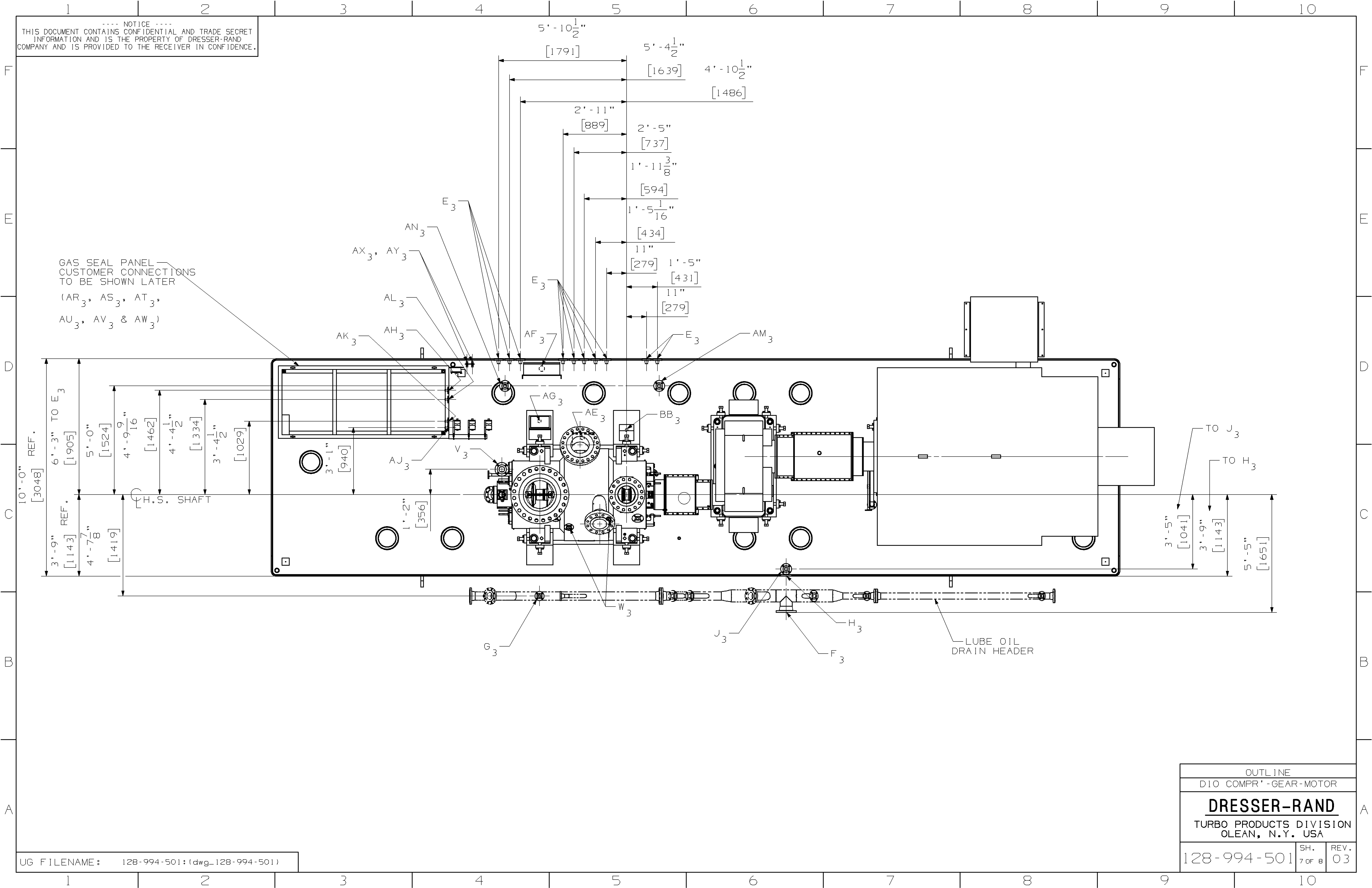
SECTION "B-B"
FROM SHT. #2

O U T L I N E		
D10 COMPR'-GEAR-MOTOR		
<u>DRESSER-RAND</u>		
TURBO PRODUCTS DIVISION OLEAN, N.Y. USA		
128-994-501	SH. 5 OF 8	REV. 03

----- NOTICE -----
THIS DOCUMENT CONTAINS CONFIDENTIAL AND TRADE SECRET
INFORMATION AND IS THE PROPERTY OF DRESSER-RAND
COMPANY AND IS PROVIDED TO THE RECEIVER IN CONFIDENCE.



----- NOTICE -----
THIS DOCUMENT CONTAINS CONFIDENTIAL AND TRADE SECRET
INFORMATION AND IS THE PROPERTY OF DRESSER-RAND
COMPANY AND IS PROVIDED TO THE RECEIVER IN CONFIDENCE.



----- NOTICE -----
THIS DOCUMENT CONTAINS CONFIDENTIAL AND TRADE SECRET
INFORMATION AND IS THE PROPERTY OF DRESSER-RAND
COMPANY AND IS PROVIDED TO THE RECEIVER IN CONFIDENCE.

COMPRESSOR HOLD DOWN BOLT
4 PLACES, 1500 FT/LBS TORQUE
AFTER FINAL FIELD ALIGNMENT
REF. HEX HEAD $1\frac{3}{4}$ -8 DIA. BOLT

AFTER FINAL FIELD ALIGNMENT,
DRILL & REAM USING COMPRESSOR
FOOT AS REFERENCE, FOR # 10 DOWEL
AND NUT (ITEMS 513 & 514).

USING GEAR HOLES
AS REFERENCE, DRILL
AND REAM FOR PULL
DOWEL AFTER FINAL ASSEMBLY
TYP. 2 PLACES

USING MOTOR HOLES
AS REFERENCE, DRILL
AND REAM FOR PULL
DOWEL AFTER FINAL ASSEMBLY
TYP. 4 PLACES

(506)
(505)
TYP.
4 PLACES

(502)
11 EACH SIDE
22 TOTAL

NOTES:

1. SHIMS, JACKSCREWS & DOWELS
FOR GEAR & MOTOR SUPPLIED
BY GEAR & MOTOR VENDORS.
2. ENCIRCLED ITEMS (XXX)
ARE FOR DRESSER-RAND USE ONLY.
3. SEE DETACHED BILL OF MATERIAL
128-994-201.

OUTLINE		
D10 COMPR'-GEAR-MOTOR		
DRESSER-RAND		
TURBO PRODUCTS DIVISION OLEAN, N.Y. USA		
128-994-501	SH. 8 OF 8	REV. 03