

V-110  
INLET SEPARATOR  
VENDOR: PENFABCO  
SIZE: 42" x 12' S/S  
CRN: E2821.2 S/N: 1357  
A 176513

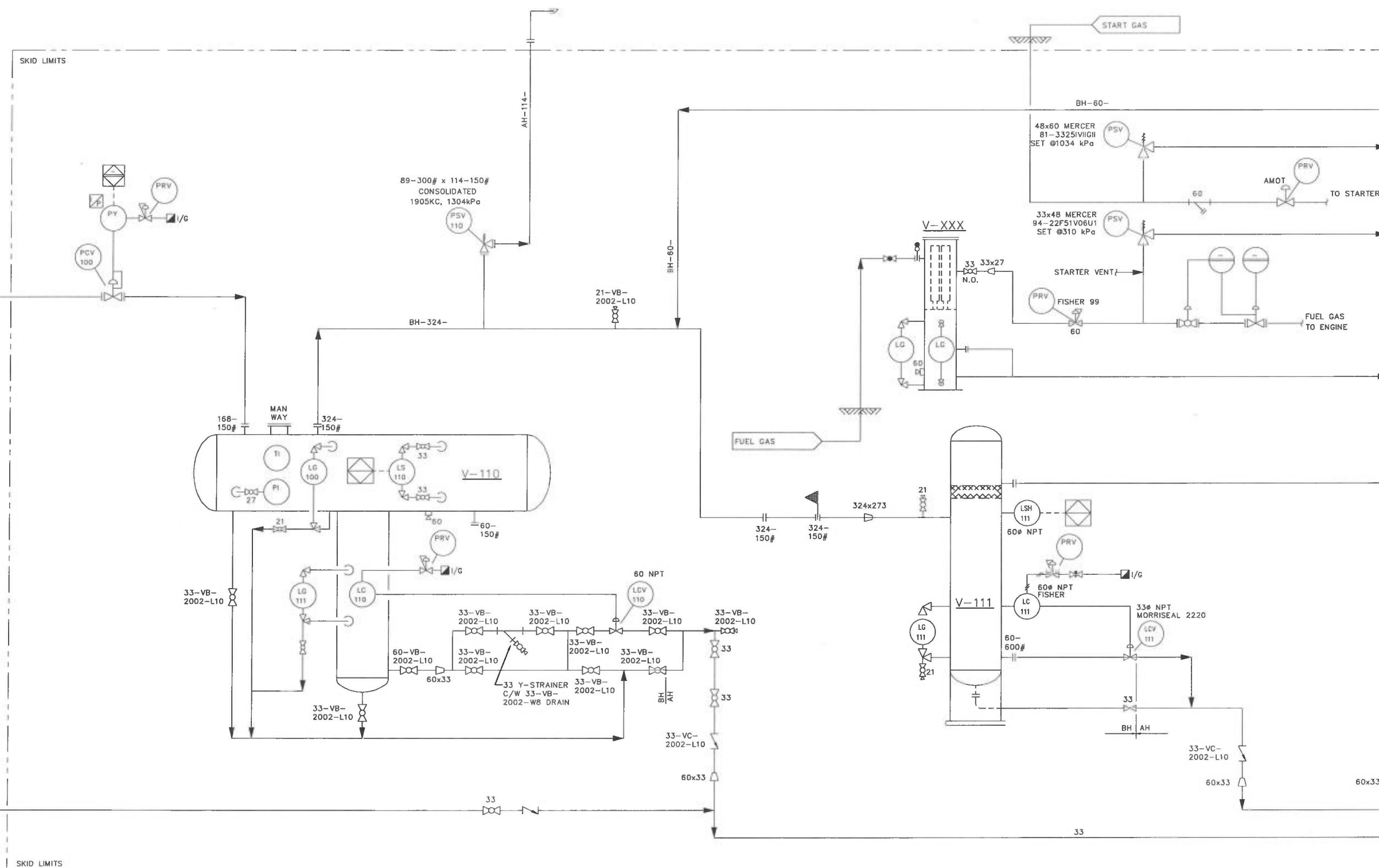
V-XXX  
FUEL FILTER SEPARATOR  
VENDOR: KINGTOOL MODEL: UGWV24S1  
D.P.: 1034 PSI  
SIZE: 168" x 5'-8"  
CRN: 5257.21 S/N: 80-898

V-111  
1st STAGE SUCTION SCRUBBER  
MAWP: 1265 kPa @34°C  
CRN 2471.2  
BARBER ENGINEERING

ALH-114-  
BLH-168-

FOR CONTINUATION SEE SHEET 6

FOR CONTINUATION SEE SHEET 8



SHEET NUMBER	DRAWING NUMBER	REV
7 OF 18	F-33517-F-00-01	6

01-17-105-01W6-MF-0002-01

V-112  
1st STAGE SUCTION BOTTLE  
MAWP: 1965 kPa @ 34°C  
CRN E-247.1  
BARBER ENGINEERING

V-113  
1st STAGE DISCHARGE BOTTLE  
MAWP: 1965 kPa @ 34°C  
CRN E-2473.2  
BARBER ENGINEERING

V-115  
2nd STAGE SUCTION BOTTLE  
MAWP: 3447 kPa @ 149°C  
CRN E-2469.2  
BARBER ENGINEERING

V-116  
2nd STAGE DISCHARGE BOTTLE  
MAWP: 6896 kPa @ 149°C  
CRN E-2470.2  
BARBER ENGINEERING

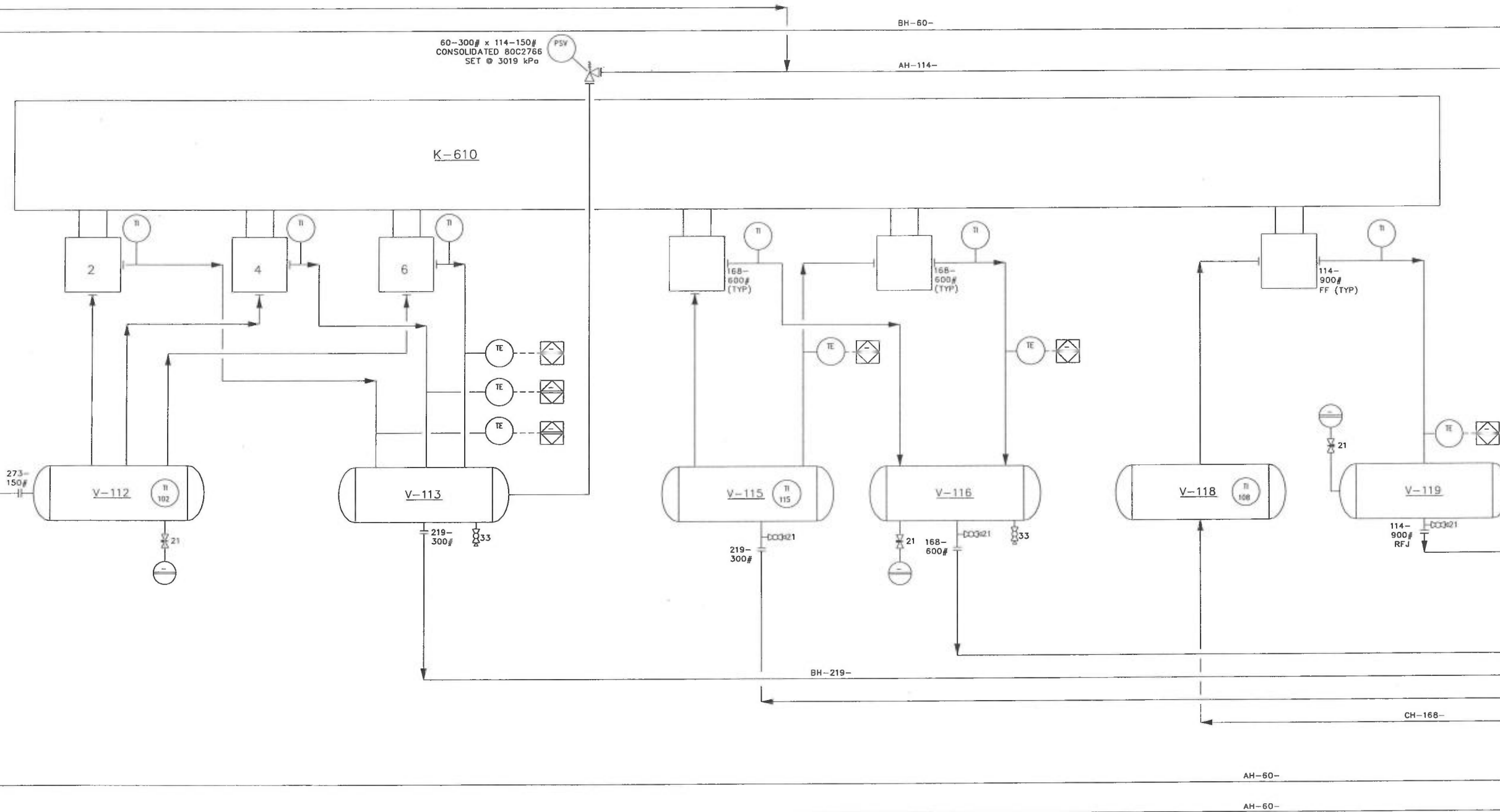
V-118  
3rd STAGE SUCTION BOTTLE  
MAWP: 6896 kPa @ 149°C  
CRN E-247-2  
BARBER ENGINEERING

V-119  
3rd STAGE DISCHARGE BOTTLE  
MAWP: 10342 kPa @ 149°C  
CRN E-2473.2  
BARBER ENGINEERING

ALH-114-  
BLH-168-

FOR CONTINUATION SEE SHEET 7

FOR CONTINUATION SEE SHEET 9



SHEET NUMBER	DRAWING NUMBER	REV
8 OF 18	F-33517-F-00-01	6

01-17-105-01W6-MF-0002-01

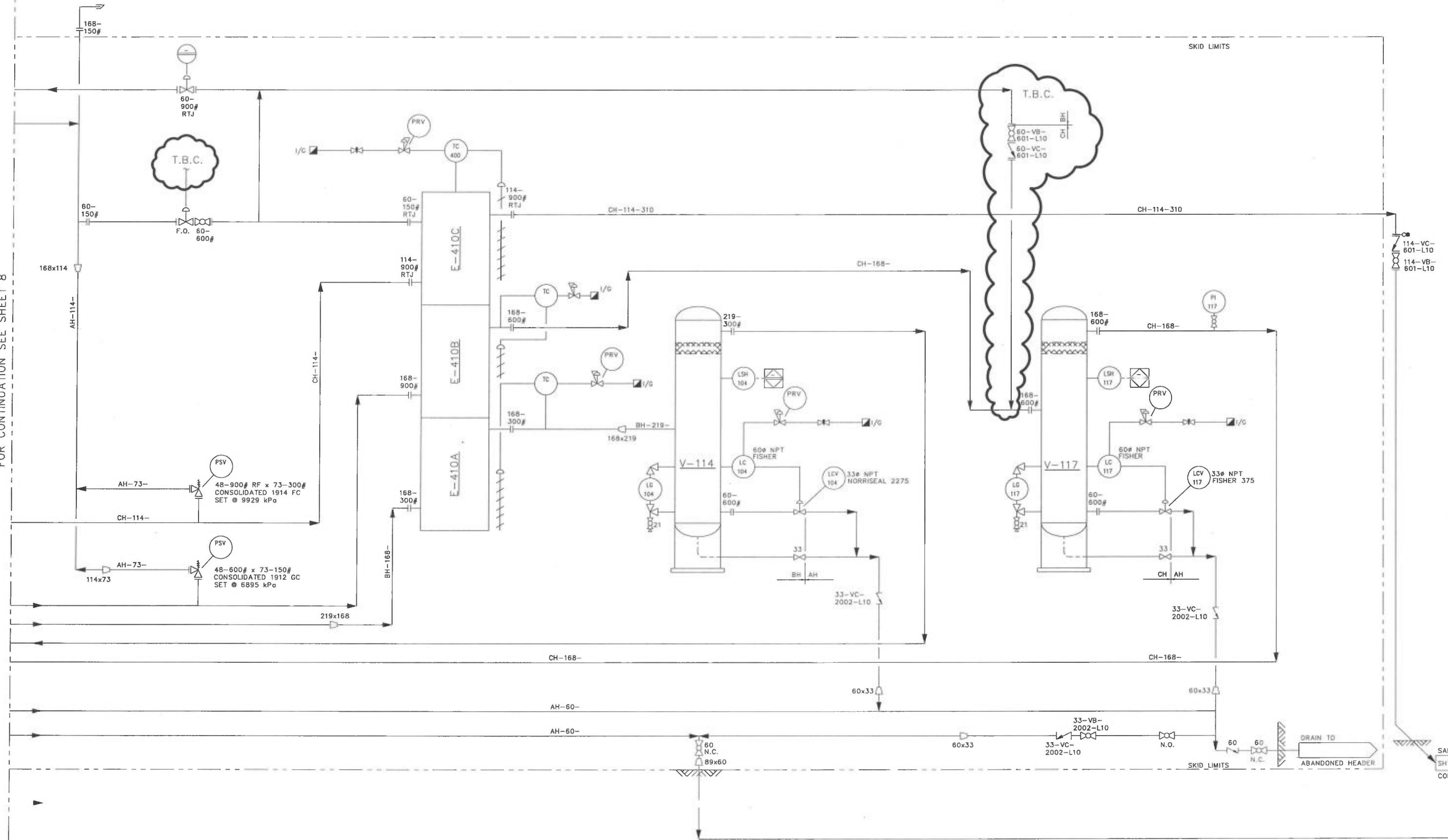
E-410 A/B/C  
AIR X-CHANGER

V-114  
2nd STAGE SUCTION SCRUBBER  
MAWP: 3447 kPa @149°C  
CRN 2468.2  
BARBER ENGINEERING

V-117  
3rd STAGE SUCTION SCRUBBER  
MAWP: 6896 kPa @149°C  
CRN 2471.2  
BARBER ENGINEERING

ALH-114-  
BLH-273-

FOR CONTINUATION SEE SHEET 8



FOR CONTINUATION SEE SHEET 10

SHEET NUMBER	DRAWING NUMBER	REV
9 OF 18	F-33517-F-00-01	6